

# Creating an ATS-N Filing

Last Modified on 02/25/2019 2:54 pm EST

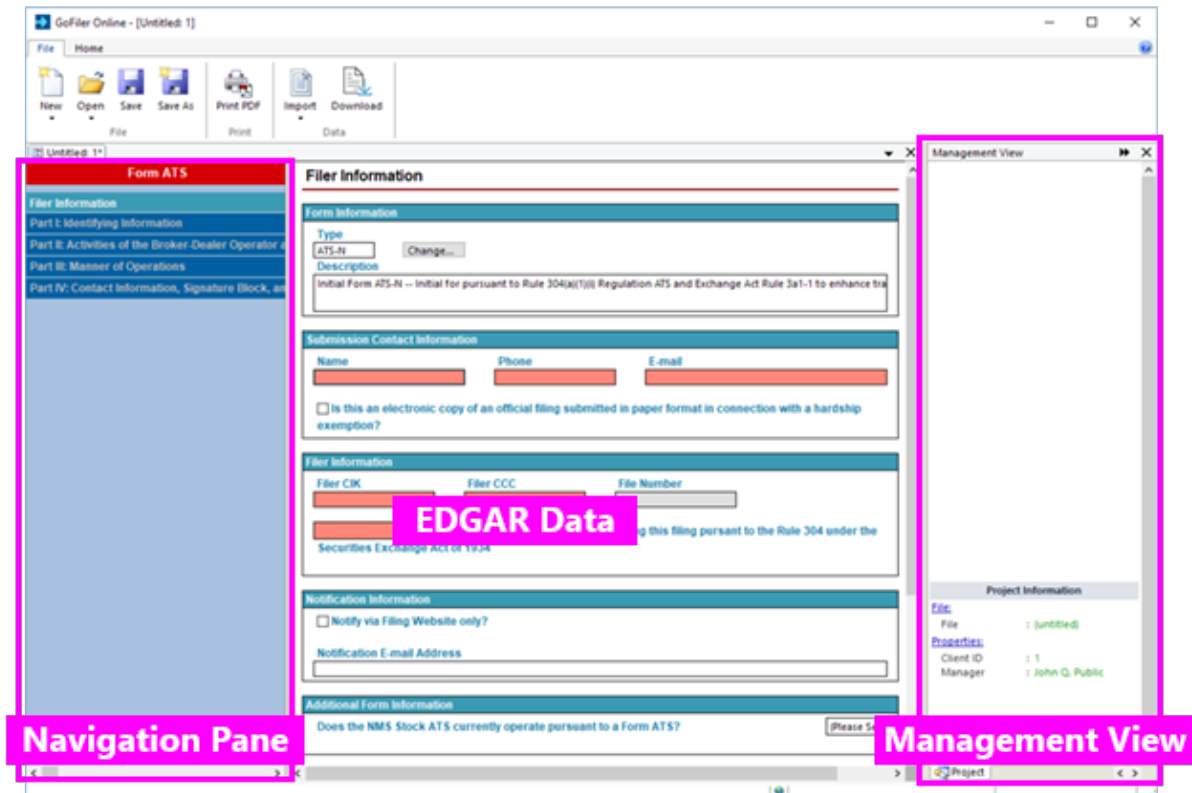
Using the software, you can create a Form ATS-N submission file for the following ATS-N forms: ATS-N, ATS-N/CA, ATS-N/MA, ATS-N/OFA, ATS-N/UA, ATS-N-C, and ATS-N-W. All of these forms can be created using the Form ATS-N software.

To create a new filing for an ATS-N submission:

1. [Add the software launcher to your Dashboard](#), if you have not already done so. Software can also be accessed via the Software page available in the left navigation panel of the web portal.
2. Open the Form ATS-N software by clicking on the software launcher. This is the blue button that contains the name of the software.
3. Click **File > New > Project/Submission**. (Note that if you use the New dialog instead of the New menu, you would select the *Form ATS-N Alternative Trading Systems Data File (XML)* option from the dialog.)
4. Choose the desired EDGAR form type from the Form list.
5. Click OK.

The submission data will open in a new window. On the left side of the window is a navigation bar that you can use to open different sections of the form. The *Filer Information* page contain the EDGAR form data for your submission. The other pages of the form contain the ATS-N questions.

On the right side of the window is the **Management View** window. This area displays the documents that are attached to the EDGAR submission as exhibits. [Learn how to attach exhibits](#).



Use the **Save** or **Save As** functions to save your filing at any time. The submission files will be saved to your Virtual File Cloud.

**Helpful Hints:**

- There are buttons available on the GoFiler Online portal to create a project automatically. Simply click the Form button underneath the launcher name on the Dashboard of the portal. You'll be able to name the project and save it to a sub-folder on your Virtual File Cloud. If you use this tool to create a new filing, you can also choose exhibit files that will be attached to the submission automatically.
- Only one submission may be open at a time. If you have a project or submission open, you will need to close it before you can create a new one. However, multiple copies of the software can be running at the same time.
- You can [set default filer information in your Preferences](#) on the GoFiler Online portal. This information will be added to your project file automatically in the Filer Information and Notification pages when you create a new project.